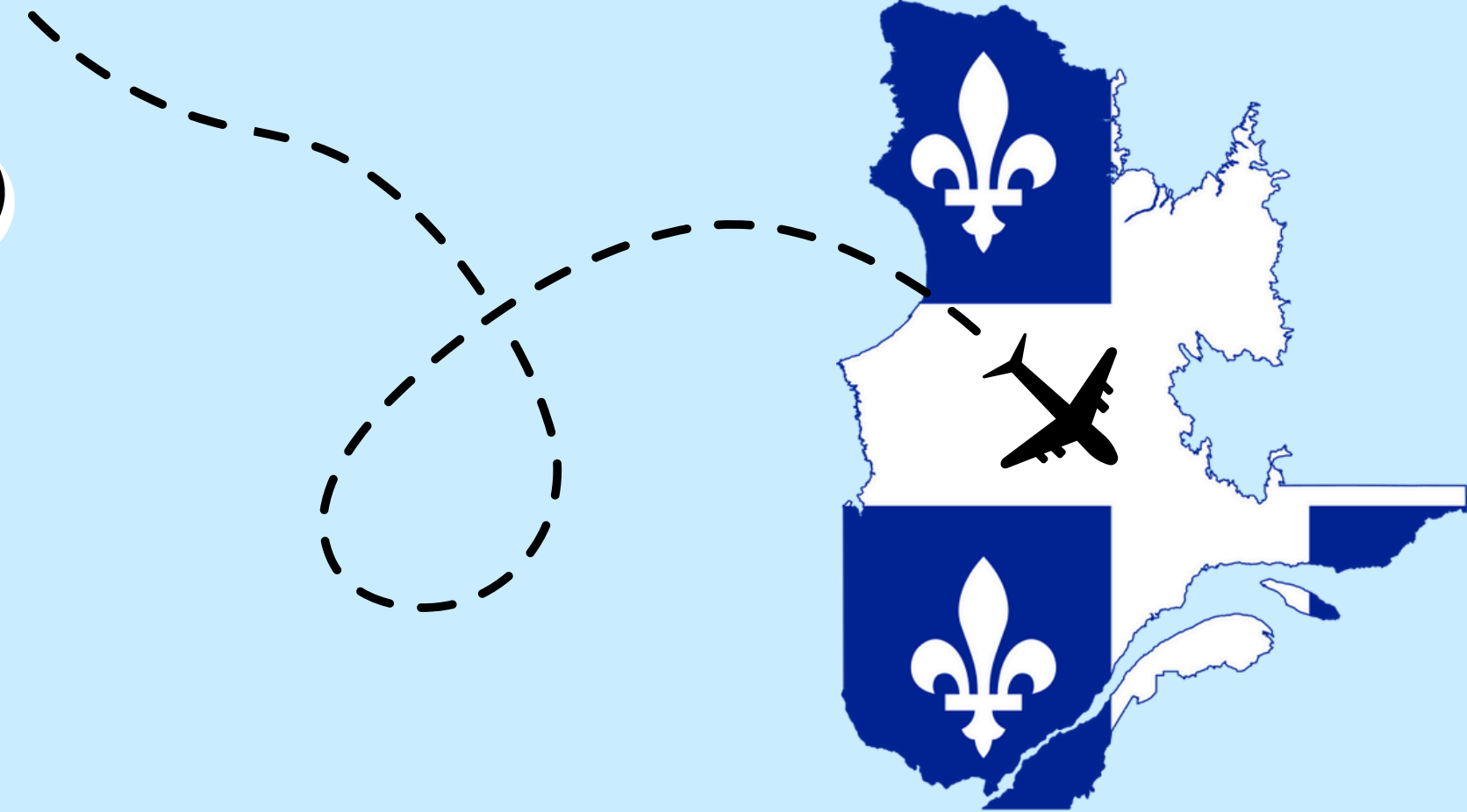


# CB STUDY ABROAD SUMMER 2025

## MEETING #3

QUÉBEC &  
MONTREAL

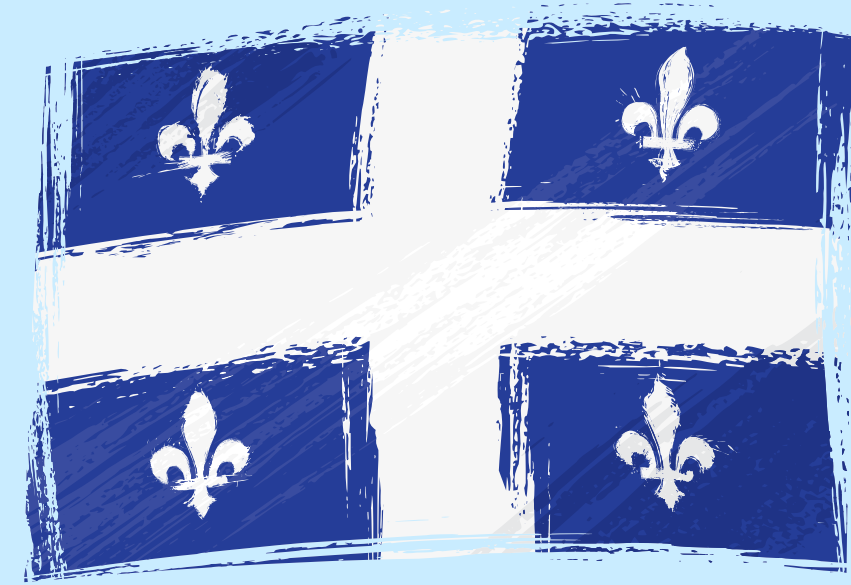


# 3 MONTHS UNTIL QUÉBEC



# Agenda

- DID YOU SIGN IN?
- FLIGHT/ITINERARY REMINDERS
- MONEY MONEY MONEY
- T-SHIRTS
- SCHOOL & PLACEMENT TEST
- BREAK OUT: PROJECTS & ALLERGIES







**Madame delRosario  
Holicong**



**Señorita Gray  
Sup. WL & ELD**

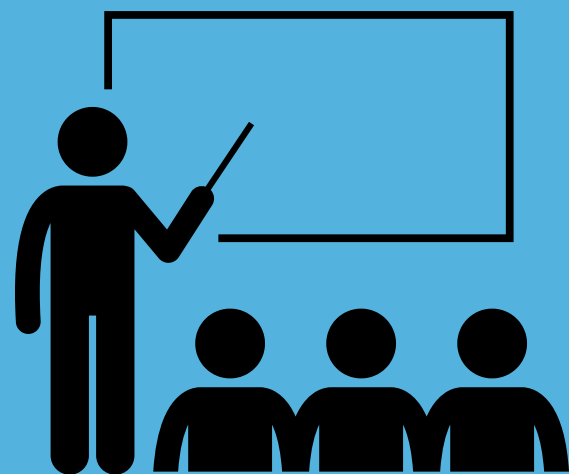


**Señor Palmer  
CB SOUTH**



# THIS IS A COURSE

4 NIGHT  
CLASSES

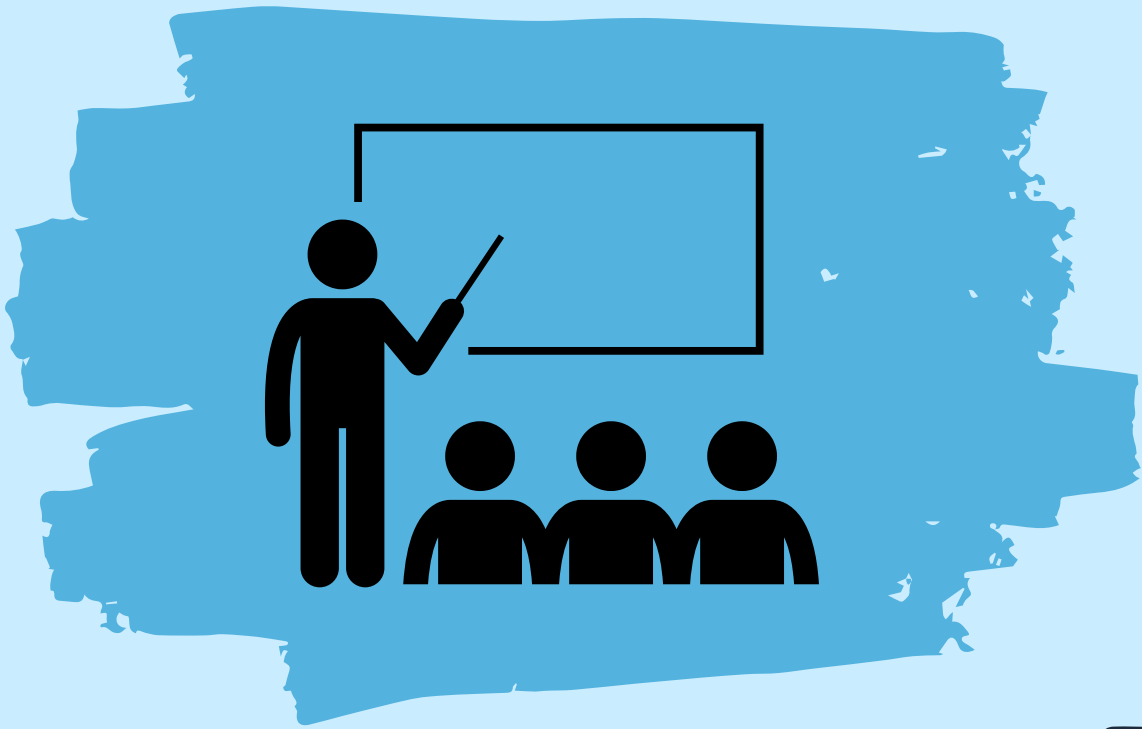


TRAVEL &  
COURSEWORK



IPAS





# MANDATORY NIGHT CLASSES

~~WED. NOVEMBER 13, 2024~~

~~WED. JANUARY 29, 2025~~

WED. MARCH 26, 2025

WED. JUNE 4, 2025



# PASSPORTS & VISAS

All students **MUST** upload a scanned picture of their passport to their T&E profile.

If you have not uploaded yours yet, your chaperone will quietly check in with you later to remind you.



# ITINERARY

June 29: Depart PHL

June 29 – July 3: Québec

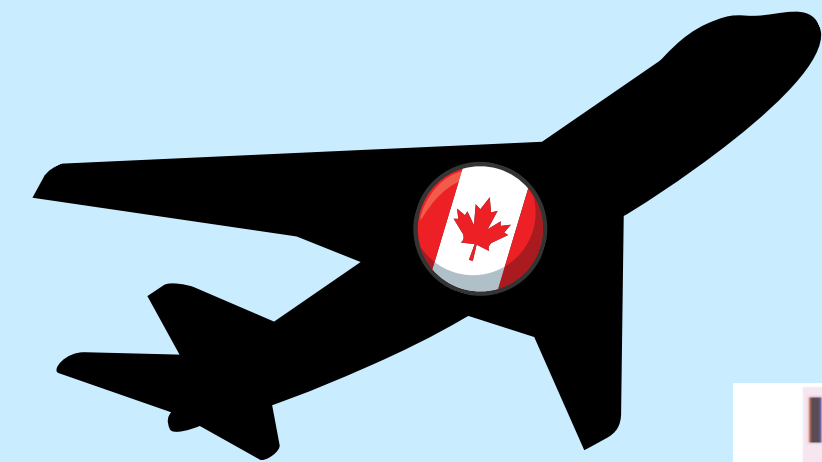
July 4: Travel to Montréal

July 5: Montréal

July 6: Return to US










# FLIGHTS

## Itinerary

Record 1: 34 Passengers / PHL-YQB / YUL-PHL Air Canada

	<b>Air Canada 8858</b>	Departing	(PHL) Philadelphia, PA	Sun Jun 29 at 09:45 AM
		Arriving	(YUL) Montreal, Canada	Sun Jun 29 at 11:26 AM
		Code Share: AIR CANADA EXPRESS JAZZ		
	<b>Air Canada 7930</b>	Departing	(YUL) Montreal, Canada	Sun Jun 29 at 01:05 PM
		Arriving	(YQB) Quebec City, Canada	Sun Jun 29 at 01:55 PM
		Code Share: AIR CANADA EXPRESS JAZZ		
	<b>Air Canada 8863</b>	Departing	(YUL) Montreal, Canada	Sun Jul 06 at 08:30 PM
		Arriving	(PHL) Philadelphia, PA	Sun Jul 06 at 10:07 PM
		Code Share: AIR CANADA EXPRESS JAZZ		

JUNE 29 - JULY 6

# GENERAL REMINDERS:

## PACKING:

Pack light!

We wear same outfit all day.

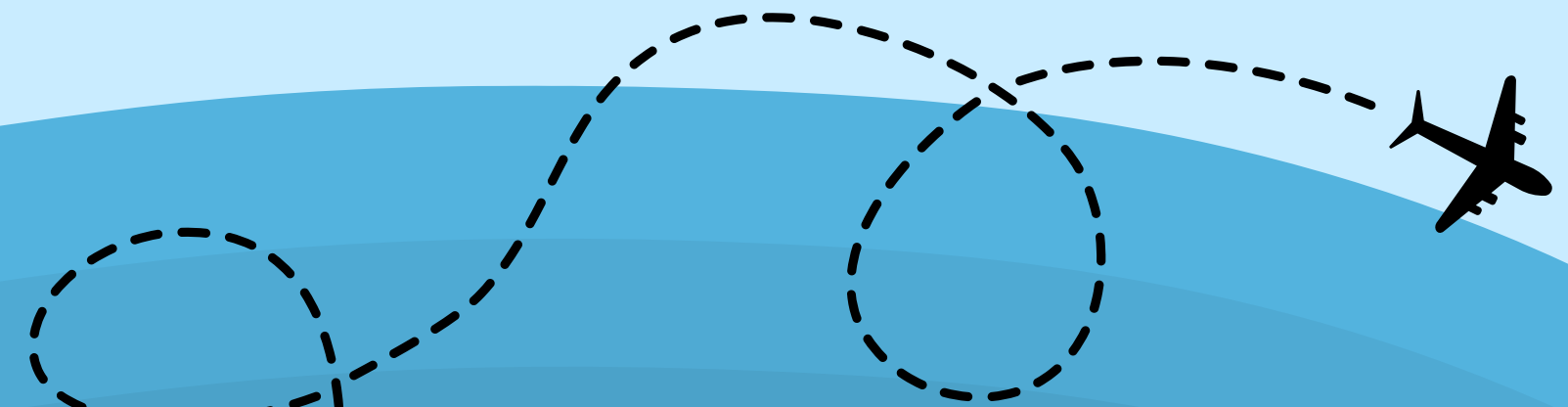
25" Suitcase (not including wheels).

Avoid large items (including souvenirs)

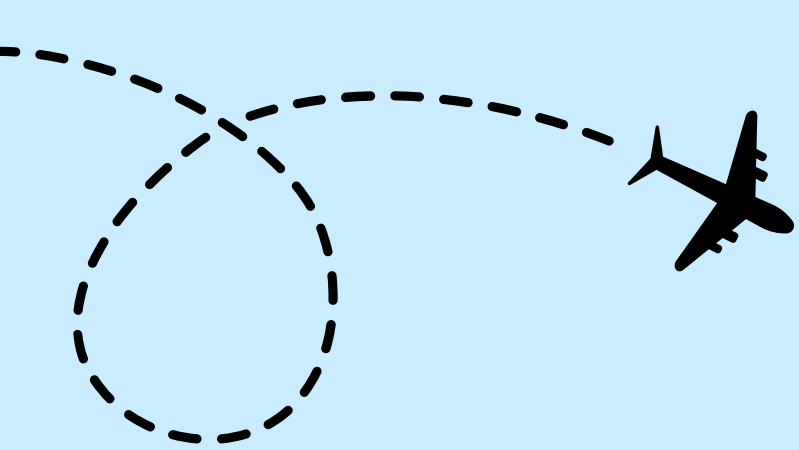
**You will be provided a T&E backpack as your carry-on item.**

## PRESCRIPTIONS

Parents/Guardians will provide prescription information to chaperones before our final meeting in June. You will receive an email with directions.







# INCLUDED IN THE PRICE

 **ROUND-TRIP AIRFARE**

 **GROUND TRANSPORTATION**

 **LODGING**

 **FULL-TIME COORDINATOR**

 **EDUCATIONAL ITINERARY**

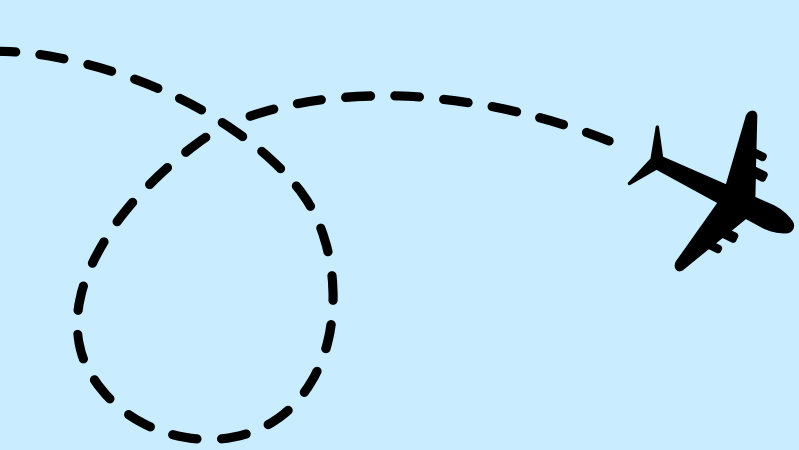
 **GUIDED TOURS**

 **2 DAILY MEALS**

 **IMMERSION LESSONS**

 **OFFICIAL CERTIFICATE**

 **EXCURSIONS & VISITS**



# NOT INCLUDED



US CHARTER BUS TO  
AND FROM AIRPORT

**\$75 - \$120  
APPX.**

SPENDING MONEY

**UNIQUE TO  
EACH FAMILY**

NON-REFUNDABLE DEPOSIT

**\$200**

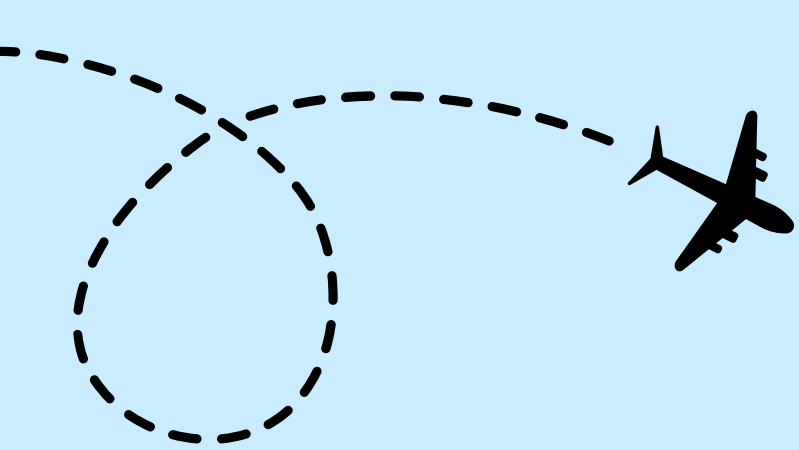
TIP MONEY

**\$50 CASH**

INTERNATIONAL PHONE PLAN

**\$10 - \$15 PER DAY**





**NOT INCLUDED**



**US CHARTER BUS TO  
AND FROM AIRPORT**

**\$85**

**TIP MONEY**

**\$74**

**\$159 TOTAL**



# PRICE & PAYMENT

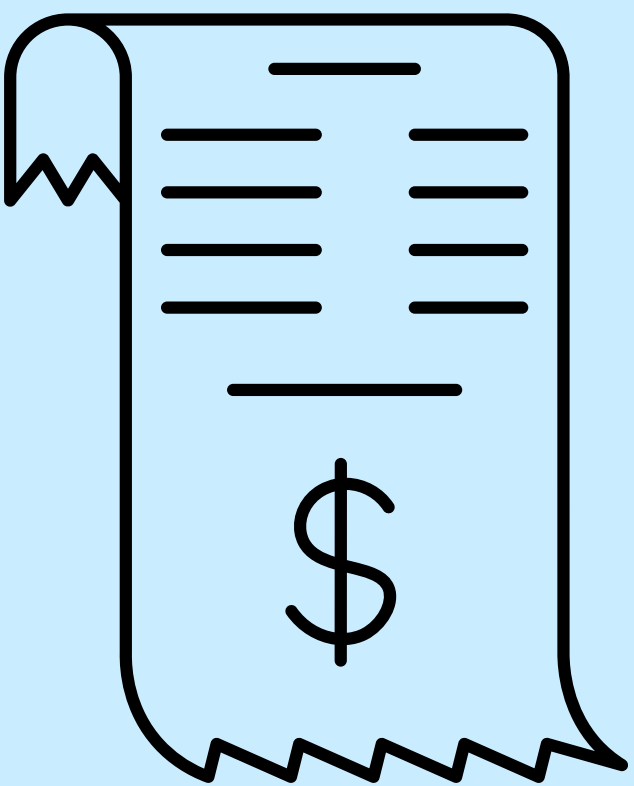
PLEASE REACH OUT TO TRAVEL &  
EDUCATION IF YOU HAVE QUESTIONS  
ABOUT PAYMENTS.



# HOW MUCH MONEY SHOULD I BRING?

- TRY TO PROCURE \$50-\$100 IN CANADIAN DOLLARS BEFORE WE DEPART. CONTACT YOUR BANK.
- YOU CAN GET CURRENCY IN THE AIRPORT, BUT WILL PAY MORE
- MOST STORES IN THE CITIES WILL TAKE ATM & CREDIT CARDS.
- PRE-PAID CREDIT CARDS / VISA GIFT CARDS DO NOT ALWAYS WORK.
- TIPPING IS CUSTOMARY AT RESTAURANTS AS IT IS IN THE USA (BETWEEN 15-20%).
- APPLE PAY IS ALSO WIDELY ACCEPTED.



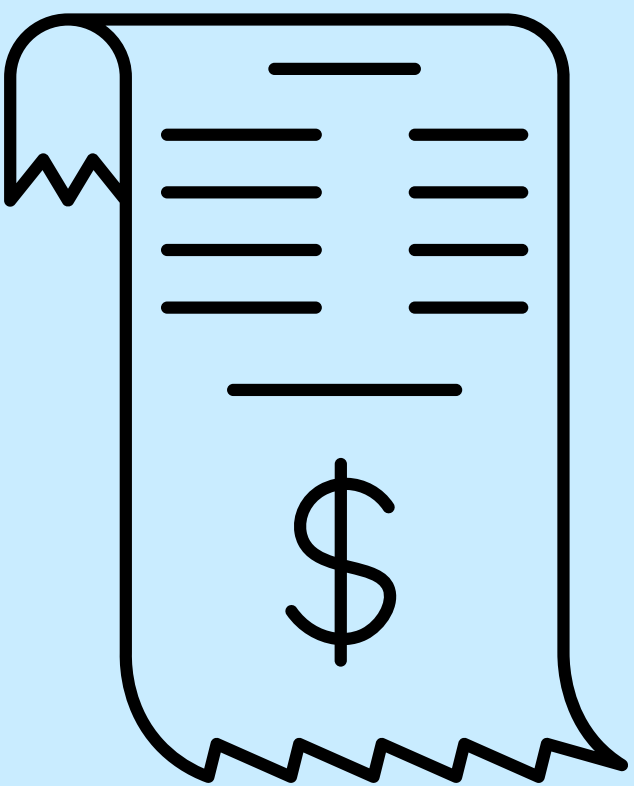


# GROUP ACTIVITY

SPEAKING OF  
RESTAURANTS

LOOK AT THE RECEIPT AND  
ANSWER THESE QUESTIONS:

1. WHAT IS THE NAME OF THE RESTAURANT?
2. ON WHAT STREET IS THE REST. LOCATED?
3. WHAT DID THE COUPLE ORDER?
4. WHO WAS THE WAITRESS?
5. WHAT WAS THE TOTAL BILL?
6. HOW MUCH DID THEY LEAVE FOR A TIP?
7. WHAT DO YOU THINK TPS & TVQ REPRESENT?



1. WHAT IS THE NAME OF THE RESTAURANT?

L'ASSIETTE FISCALE

2. ON WHAT STREET IS THE REST. LOCATED?

RUE DE MARLY

3. WHAT DID THE COUPLE ORDER?

MUSSELS & FRENCH FRIES AND TWO ICED TEAS.

4. WHO WAS THE WAITRESS?

JULIE

5. WHAT WAS THE TOTAL BILL?

20.70 \$

6. HOW MUCH DID THEY LEAVE FOR A TIP?

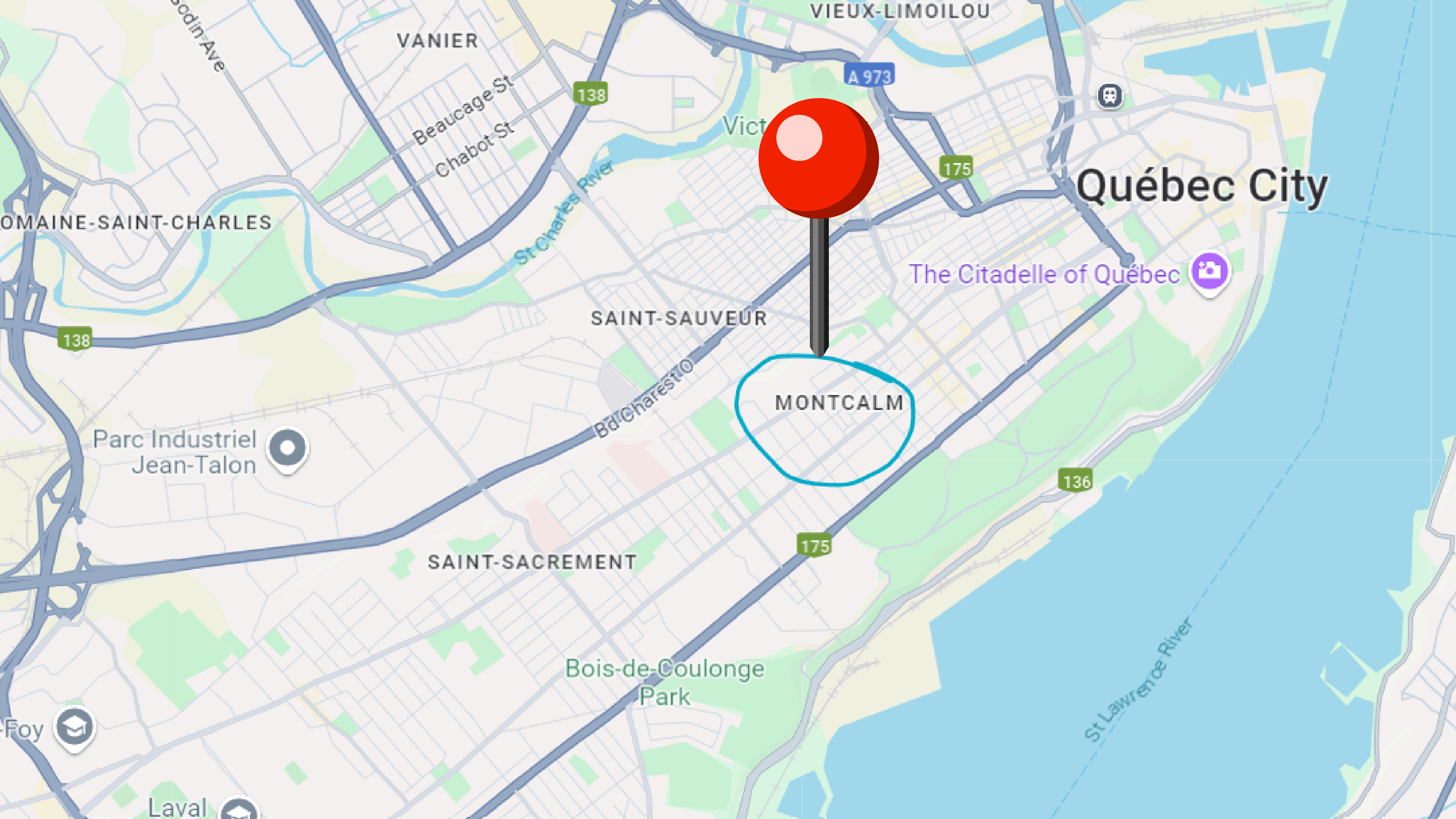
3.00 \$

7. WHAT DO YOU THINK TPS & TVQ REPRESENT?

TAXE SUR LES PRODUITS ET SERVICES

TAXE DU VENTE DU QUÉBEC





VANIER

VIEUX-LIMOILLOU

Beaucage St  
Chabot St

138

A 973

175

Québec City

DOMAINE-SAINT-CHARLES

138

The Citadelle of Québec

SAINT-SAUVEUR

MONTCALM

Parc Industriel  
Jean-Talon

Bd Charest

136

SAINT-SACREMENT

175

Bois-de-Coulonge  
Park

St Lawrence River

Foy

Laval

Order our CLASS T-SHIRT  
COST → \$16.95



order our CLASS T-SHIRT  
COST → \$16.95

B·O·N·J·O·U·R

CB STUDY ABROAD  
QUÉBEC & MONTRÉAL



**DON'T  
MISS OUT!**

**DEADLINE TO ORDER:  
MAY 9, 2025**





# **CHECK IN!**



**We check in ALL THE TIME when we are abroad.**

**Let's practice!**

**CHAPERONE**

**GROUP 1**

**SEÑOR PALMER**

**CHAPERONE**

**GROUP 2**

**SRTA. GRAY**

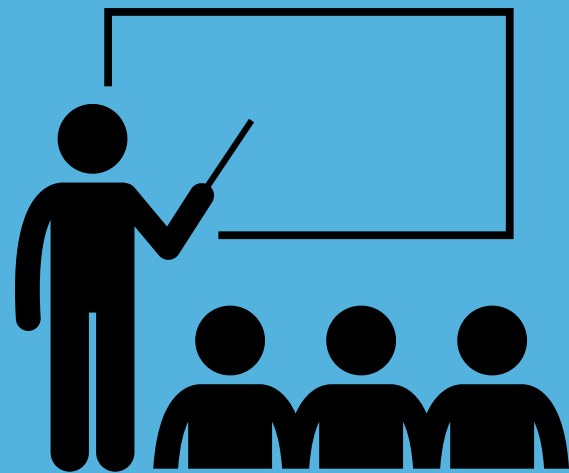
**CHAPERONE**

**GROUP 3**

**MADAME DELRO.**

THIS IS A -----

4 NIGHT  
CLASSES



TRAVEL &  
COURSEWORK

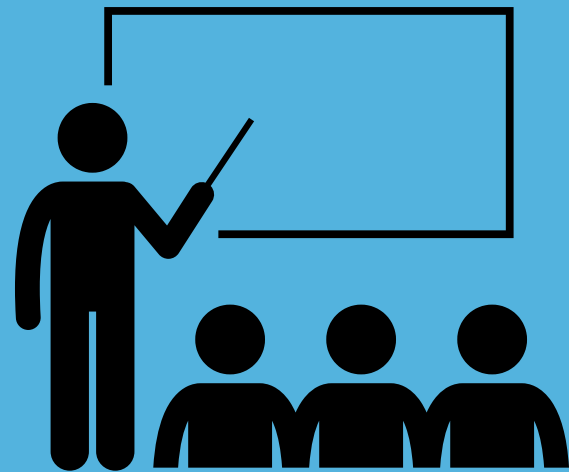


IPAS



# THIS IS A **COURSE**

4 NIGHT  
CLASSES



TRAVEL &  
COURSEWORK



IPAS



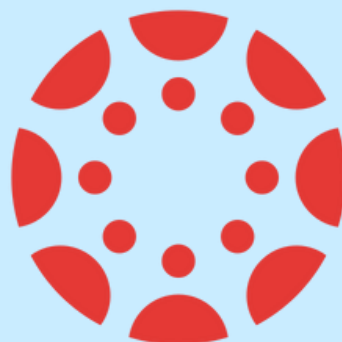


# ACTIVITY 1

## GUIDING QUESTION

1. REVIEW THE FEEDBACK LEFT FOR YOU IN CANVAS AFTER OUR LAST MEETING.

2. MODIFY YOUR QUESTION BY FOLLOWING THE FEEDBACK. WORK WITH YOUR CHAPERONE IF YOU NEED HELP.



# ACTIVITY 2

## ALLERGY VERIFICATION

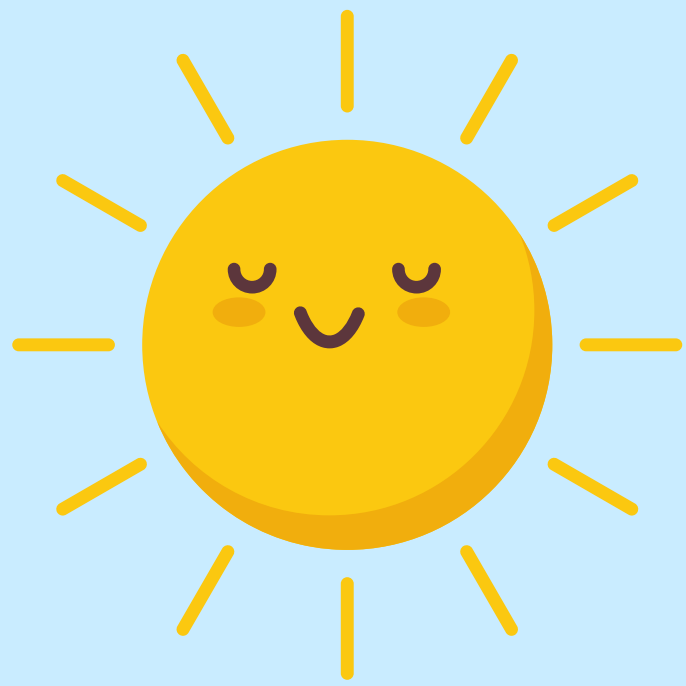
COMPLETE THE ALLERGY INFORMATION CHART AS IT IS PASSED AROUND TO EACH CHAPERONE GROUP.

YOU ALSO ENTERED THIS INFORMATION IN YOUR T&E PORTAL, BUT IT IS ALSO IMPORTANT FOR CB STAFF TO HAVE ON PAPER WHILE ABROAD.



# POSSIBLE TOPICS

- HISTORY / IMPORTANCE OF QUÉBEC / MONTRÉAL
- HISTORY OF FRENCH SETTLEMENT IN QUÉBEC
- WORLD HERITAGE SITES
- DIFFERENCE BETWEEN CANADIAN FRENCH & FRANCE FRENCH
- GASTRONOMY (FOOD) (BE SPECIFIC)
- (HISTORY & CULTURAL IMPORTANCE OF FRENCH PÂTISSERIE)
- PRODUCTS & PERSPECTIVES
- CULTURAL COMPARISONS
- HISTORICAL FIGURES & THEIR CONTRIBUTIONS TO THE REGION
- TREATY HISTORY BETWEEN NATIVE TRIBES & EURO. SETTLERS.



**NEXT MEETING**

**WEDNESDAY**

**JUNE 4, 2025 – 6PM**

**CB SCHOOL BOARD**

**ROOM**



3 MONTHS UNTIL QUÉBEC

